



GM'S REPORT

DIVERSE FUEL MIX IS ESSENTIAL FOR RELIABLE POWER

Providing members with safe, reliable, and affordable power is the mission of electric cooperatives across the nation. It is the very reason that we exist.



Don Englet
GENERAL MANAGER

On the local level, Firelands Electric's members see the work that goes into providing reliable electricity each time they come across one of our line crews maintaining or repairing utility poles and wires. Certain components are also necessary at the regional and national levels. For instance, dependable transmission lines and infrastructure are a must. One of the most essential cornerstones for maintaining a dependable supply of electricity, though, is a diverse mix of power generation resources.

The U.S. electric grid has undergone major changes over the past decade. The share of electricity generated from coal plants has declined significantly, while the share from natural gas and intermittent wind and solar generation has grown. Fuel diversity means that your electricity is supplied by a variety of generation technologies, each with its own performance capabilities during different weather and seasonal conditions, and posing its own set of challenges.

Dispatchable generation technologies can be turned on and off based on consumers' needs at any given time. Large steam generation plants (which most commonly use coal or nuclear fuels) are generally considered "baseload," meaning that they are designed to run efficiently 24/7 to serve as the foundation of the available electricity mix. However, steam plants are less capable of significant changes in output (up or down) to meet the various peaks and dips as conditions of the electric grid change.

Natural gas is the most versatile fuel, powering large combined-cycle plants (often called peaking plants) that can operate as baseload but are also more flexible for

ramping the production of electricity up and down. These capabilities are essential for meeting the high demand for electricity on the hottest and coldest days, and for balancing renewable energy sources, such as solar and wind, which can be intermittent or lacking in certain weather conditions.

Most hydroelectric power comes from generators inside large dams, like the Robert Moses Niagara Power Plant, located on the Niagara River. Like other generation sources (such as coal), the Niagara plant produces electricity on an as-needed basis — as long as there is enough water available.

Over the past decade, the amount of electricity generated from wind and solar plants has increased dramatically. These beneficial "no-fuel-required" plants are capable of delivering electricity — but only when the wind blows and the sun shines. Different seasons and weather patterns can have a significant impact — both positive and negative — on output.

Ultimately, our electric grid is most reliable when a wide range of technologies is available.

When conditions lead to lower generation from one type of source, others can help compensate.

When there is an imbalance, such as a major winter storm causing electricity use to skyrocket, grid operators can occasionally be forced to reduce demand by implementing rolling blackouts to keep the grid operating.

Cooperatives across the country, including Firelands Electric, work diligently to maintain a wide range of generation facilities. After all, our goal is to provide a reliable power supply for energizing the communities we serve, for today and tomorrow.





CO-OP CONTESTS

WATT are you reading?

WINNERS



JENSEN GREGORY

Son of Brennan and Nicole Gregory

New London Local Schools
Fifth grade

Favorite book: *Charlie Brown: All Tied Up* by Charles Schulz

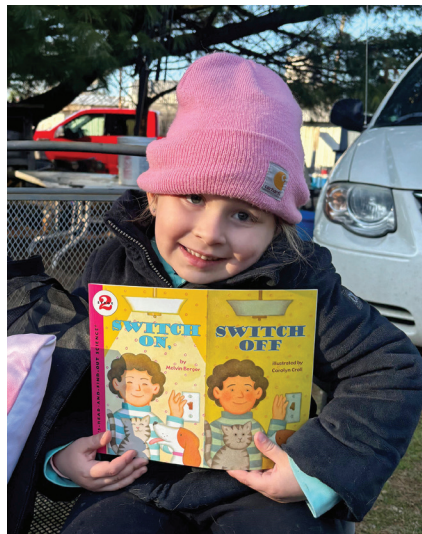


IVAN WILLIS

Son of Mike and Samantha Willis

New London Local Schools
Kindergarten

Favorite book: *If You Ever Want to Bring an Alligator to School, Don't!* by Elise Parsley



HADLEY EASTERDAY

Daughter of David and Connie Easterday

McMullen Elementary (Loudonville)
Kindergarten

Favorite book: *The Storybook Bible*



YOUTH PROGRAMS



Education helps shape the leaders of tomorrow. That's why Firelands Electric includes it as one of our seven core principles. The A Team is a cooperative program designed to encourage students in their pursuit of academic excellence. Students in grades 6 to 8 are invited to participate and be recognized for their hard work and dedication to education.

ACADEMIC EXCELLENCE

Winners of April drawing receive \$15 gift cards



Massen Dittmer
New London Middle School
Son of Garrett and Britany Dittmer



Brayden Westbrook
Temple Christian Academy
Son of Brandon and Tammy Westbrook

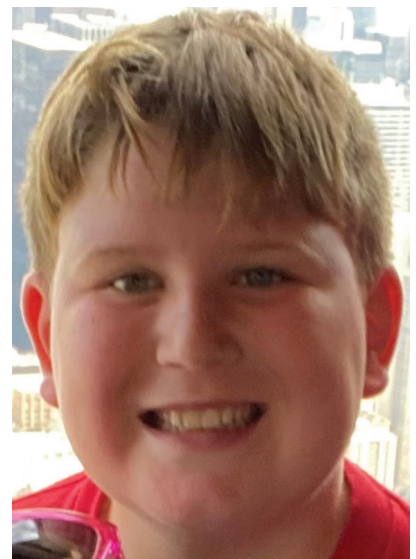
Send us your grade card and win!
Next drawing is July 10.

How you can win

Students in grades 6 to 8 who have a minimum of three A's on their most recent report card and whose parents or guardians are members of Firelands Electric Cooperative are eligible to apply. A copy of the report card should be submitted by mail to Attn: The A Team, Firelands Electric Cooperative, 103 Industrial Drive, New London, OH 44851. Report cards may also be emailed to members@firelandsec.com.

Be sure to include the student's name, school, grade, address, phone number, parents' or guardians' name(s), and an email address on your entry.

Complete program details are also available at www.firelandsec.com/team.



Harvey Fawcett
New London Middle School
Son of Steve and Abby Fawcett



ENERGY EFFICIENCY

SCOTT'S ENERGY SPOT: WARM WEATHER SAVINGS



Scott Carbary
ENERGY ADVISOR

Efficiency tips from Firelands Electric's energy advisor

The summer is coming!
The summer is coming!

During his 1775 midnight ride, Paul Revere cried out, "The British are coming!" to warn colonists about the arrival of the redcoats. Like Revere, climbing temperatures have more than a few people shouting, "The summer is

coming!" An exclamation of excitement for most, it's also the battle cry for members concerned about increased energy costs to cool their homes. But not to fear — with a simple look around your home and the tips below, you can make some low-cost adjustments that will keep your living space more comfortable and your energy bills more affordable.

According to the U.S. Department of Energy's website, 48% of an average home's heat gain in the summer comes through its windows. (Heat gain is when the hot air outside sneaks into your home, raising the temperature inside and causing your AC to run harder and more frequently.) While sealing any air leaks around your windows is one low-cost way to stop heat gain, there is also one defense that is nearly no-cost: Make sure that windows, especially those facing the south or west, have window coverings installed and use them to your advantage.

By closing blinds or curtains on sunny days, you can help keep the heat outside, where it belongs.

Another 14% of a home's summer heat gain comes from appliances and people. Postponing cooking, bathing, and laundry until after the hottest portion of the day (typically between 2 p.m. and 6 p.m.) can improve your home's comfort level and reduce AC run times, which translates into both energy and financial savings.

To further increase your savings, give your cooling system a thorough once-over before the dog days of summer arrive. Clear any landscaping, twigs, weeds, and debris away from the outdoor AC condenser, making sure the cooling fins are clean and have a clear path for air flow. Also, change or clean the air filters in your furnace or air handler, which circulates your AC system's cool air throughout your home. Before installing window air conditioners, wash the filters and remove any dirt or grime buildup from the cooling fins.

If the approaching heat of the summer has you feeling the need to sound the alarm concerning your energy bill, take the time to complete some of the inexpensive improvements we've listed here. Spending just a few minutes preparing your home now can help you both keep cool and rein in your energy costs this summer.

For additional energy efficiency tips, visit www.firelandsec.com/energy-education, or contact Firelands Electric Cooperative to schedule an appointment for your FREE energy consultation. I'm always happy to provide you with home energy efficiency guidance!





5th Anniversary



CURRENT POSITION: DISTRICT 3 TRUSTEE

Tom Lucha

NICKNAME: TOMMY BOY

ROOKIE YEAR: 2020

SPOUSE: SARAH

FAMILY: DAUGHTER IZZY

BIGGEST FAN: JASPER THE FAMILY DOG

OTHER POSITIONS PLAYED: ASSOCIATE
SALES REP WITH WALCHER SEED, LTD.

PREVIOUS POSITIONS: CABLE TECH,
RESTAURANT MANAGER, U.S. ARMY

FAVORITES: CLEVELAND SPORTS,
COOKING, LORD OF THE RINGS,
AND FROZEN 3 MUSKETEERS



REMINDER:

Bills due on June 14
will reflect Firelands
Electric's new rates.

For a detailed breakdown
of the cooperative's rates, visit
www.firelandsec.com/rate-schedules

ENERGY EFFICIENCY SCAVENGER HUNT

June is the second month of the co-op's
six-month contest!

To enter, submit or post
a photo of something
in your home, garage,
barn, or business
that fits the monthly
theme by the 25th of
each month. The next
deadline is June 25.

WIN A
\$25
bill credit

June's theme is WINDOW COVERINGS

Entries can be submitted by:

- Posting your photo on your Facebook page and tagging the co-op
- Emailing your photo to members@firelandsec.com

Visit www.firelandsec.com/contests for
complete details.



FIRELANDS ELECTRIC COOPERATIVE LOCAL PAGES



Annual meeting snapshots



Firelands Electric Cooperative hosted its 87th annual meeting at the Ashland University Myers Convocation Center on Saturday, March 29. Nearly 300 co-op members and guests enjoyed the breakfast meeting, which included a recap of 2024 and a preview of the projects planned for 2025 and beyond.

Left: The results of the board of trustees elections were announced during the cooperative's recent annual meeting. Incumbent Carl Ayers of Perrysville (left) was re-elected to represent District 5, while Lon Burton of New London (center) and Adrian Finlay of Ashland (right) were elected to represent districts 4 and 8.

Below: Cooperative members who attended Firelands Electric's 87th annual meeting were entered into a drawing for the chance to win one of seven bill credits, worth a combined total of \$300. The winners included (l-r): Tim Parks of Ashland, Tom Kaufman of Jeromesville, Thomas Forbes of Perrysville, Dan McNaul of Ashland, John Retherford of Jeromesville, John Martin of New London, and Joyce Ritchie of New London.

To view additional photos from your 2025 annual meeting, check out the online gallery at www.flickr.com/photos/firelandsec/albums.





COOPERATIVE UPDATE

BOARD MEETING *highlights*

Firelands Electric Cooperative's Board of Trustees met March 25 and covered the following items:

- Board President Dan Schloemer reported that the cooperative received 22 membership applications for approval by the board.
 - General Manager Don Englet reviewed the monthly safety and training, tree-trimming, and outage reports. He also discussed this year's impressive SAIDI score (a measurement of reliability), noting that the cooperative was doing extremely well at keeping outages to a minimum.
 - Representatives from BHM CPA Group, Inc., reviewed the annual audit report, stating that the co-op once again had a clean audit.
 - In Director of Operations Rick Bowers' absence, Englet reported on activities in the operations department, including expenditures to date for the Coulter substation rebuild project.
 - Englet reviewed final plans for the coming weekend's annual meeting.
 - Schloemer provided a report on his recent OREC meeting in Columbus, including plans for the Summer Conference and future Project Ohio dates.
 - The board appointed cooperative attorney Heather Niedermeier Heyman to serve as the trustee elections committee chair. They also appointed the following members for the election's credentials committee: Dennis Rees (District 1), Gary Hunter (District 2), Brandon Walcher (District 3), John Noss (District 4), Evan Hahn (District 5), Steve Willeke (District 6), Richard Rush (District 7), David Seiss (District 8), and Gabriel Heileman (District 9).
 - Director of Finance and Accounting Tabi Shepherd reviewed the February financial reports and provided an update on recent accounting and billing department activities.
 - The board reviewed the need to replace a 20-year-old piece of digging equipment. Following discussion, the board approved the purchase of a replacement.
 - In Director of Communications and IT Andrea Gravenhorst's absence, Englet reported on the recent activities involving the member services and IT departments.
- The cooperative's next board meeting is scheduled for Tuesday, June 24. If you would like to attend the next scheduled meeting, please contact the Firelands Electric office at 1-800-533-8658.

FIRELANDS ELECTRIC COOPERATIVE, INC.

OUTAGE HOTLINE

1-800-533-8658

OFFICE

103 Industrial Drive
New London, OH 44851
1-800-533-8658

OFFICE HOURS

Mon.-Fri. 7:30 a.m.-4 p.m.
www.firelandsec.com



BOARD OF TRUSTEES

Dan Schloemer
President, District 1

Kevin Reidy
Vice President, District 6

Carl Ayers
Secretary/Treasurer, District 5

Joe Williams
District 2

Tom Lucha
District 3

Lon Burton
District 4

Greg Hess
District 7

Adrian Finlay
District 8

Brian Cucco
District 9

GENERAL MANAGER

Don Englet

HAVE A STORY SUGGESTION?

Email your ideas to:
members@firelandsec.com

Firelands
Electric
COOPERATIVE
A Touchstone Energy® Cooperative



SHINING A LIGHT ON Community

Firelands
Electric
COOPERATIVE
A Touchstone Energy® Cooperative

2024
ANNUAL REPORT



Board

OF TRUSTEES

Firelands Electric Cooperative was founded in 1936 and serves a four-county area that is divided into nine board districts. During the annual election process, the co-op's membership elects one fellow member residing in each district to represent them on Firelands' board of trustees.

The nine-member board meets at the cooperative's headquarters in New London, typically on the fourth Tuesday of each month. The board of trustees governs the co-op, ensuring that it operates in the best interests of its members, which includes overseeing the general manager/CEO, setting company policy, and monitoring the finances of the cooperative. Trustees also receive ongoing education and training to better serve the membership.

Responsible for cooperative policies, rates, and objectives, the board also regularly reviews the cooperative's operating performance. As representatives of the co-op community, board members communicate the problems and needs of the membership.



DAN SCHLOEMER
District 1 Trustee
Board President



JOE WILLIAMS
District 2 Trustee



TOM LUCHA
District 3 Trustee



LON BURTON
District 4 Trustee



CARL AYERS
District 5 Trustee
Board Secretary/Treasurer



KEVIN REIDY
District 6 Trustee
Board Vice President



GREG HESS
District 7 Trustee



ADRIAN FINLAY
District 8 Trustee



BRIAN CUCCO
District 9 Trustee

Message

FROM MANAGEMENT

After nearly 90 years, Firelands Electric Cooperative continues to be a resilient member-owned utility, operating on a not-for-profit basis while providing reliable and affordable power to more than 9,280 homes and businesses across 31 townships in four counties.



The board of trustees and management prioritizes our past when it comes to capital credits, which is the money left over after covering all the cooperative's expenses. Many of these capital credits were previously used to maintain and improve the electrical distribution system, make repairs, and cover any other necessary costs associated with providing members with safe, reliable power.

For a third consecutive year, Firelands Electric Cooperative distributed \$1 million in general retirements in 2024, returning some of those strong margins back to the members. These capital credits are just one of the many benefits enjoyed by members of a not-for-profit electric cooperative.

Margins continue to be an important source of funds for not only our capital credits payouts, but also the large investments we make in our poles, lines, substations, and equipment every year. Firelands Electric Cooperative spent \$4.3 million on capital improvements in 2024. A little over half of this amount was financed, while margins supplied the rest of the capital needed.

Significant increases in the cost of doing business over the past four years have been a challenge, especially with the rate of inflation and rising material costs. Along with significant investments in the distribution system, these increasing costs resulted in the need for small rate adjustments, which were reflected on members' February 2024 and April 2025 bills.

The cooperative's board of trustees does not take rate adjustments lightly. That's why Firelands Electric's board and management team work together to ensure rate adjustments are thoroughly vetted and assessed before any action is taken. Rest assured, Firelands Electric will continue working diligently to find the right balance between reliability and affordability.



Focused

ON RELIABILITY



DON ENGLET
General
Manager

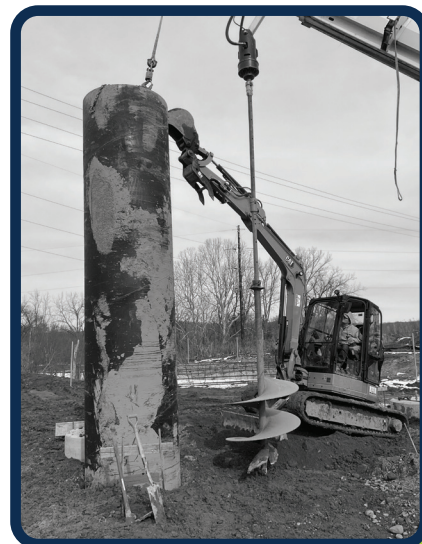
Firelands Electric Cooperative's primary goals are reliability — keeping the lights on for our members — and keeping the cost of electricity affordable. For us, this includes finding the right balance of investment in ongoing maintenance, while also making sure we are adequately planning and preparing for the future.

Reliability of our distribution system is measured using the System Average Interruption Duration Index (SAIDI). This formula takes the total of all member outage times and the number of members affected and then determines how many minutes the average member was without power for a given period.

In 2024, Firelands Electric's SAIDI score was reduced by 88% compared to 2023, and was 65% lower than the cooperative's nine-year average. This tremendous accomplishment was made possible through the hard work, dedication, and investment by the cooperative's members, board of trustees, and employees.

When compared to the same time last year, the cooperative's 2025 SAIDI numbers continue to trend in the right direction. This trend is also a result of Firelands Electric's work plan. Every four years, the cooperative develops a construction work plan that covers major projects the cooperative is undertaking for capacity, voltage, and reliability improvements.

Firelands Electric's current work plan will be completed at the end of 2025 and has tackled some of the most difficult, problematic, and expensive areas of our distribution system. While work continues in many areas of the cooperative's system, several large projects were completed in southern Ashland and western Richland counties in 2024. Throughout the distribution system, poles and conductors were replaced — doubling, and in some cases tripling, the overall capacity of the power lines. Firelands worked with members, landowners, townships,



counties, and the state to install these new lines in areas that are more readily accessible. Relocating to these areas, including along roads and driveways, was intended to make future maintenance and upkeep easier and faster.

When designing the work plan, Firelands Electric uses industry data for cost estimates. The cooperative's board has committed to investing

nearly \$12 million dollars in new distribution lines, installing updated equipment, making line improvements, and replacing our aging Coulter substation. Firelands Electric has employed new methods, materials, and technology aimed at delivering reliable, cost-effective electricity.

Firelands Electric is currently preparing the next work plan, and the cooperative will once again look to make some drastic improvements for reliability and capacity, making sure that Firelands is well prepared to serve our members well into the future. These plans include working with Buckeye Power, First Energy, and American Electric Power to bring two new transmission feeds into the cooperative's New London substation. Firelands also has a new, greatly improved transformer on order to replace the one destroyed by lightning at the cooperative's Fitchville substation. In addition, the co-op is finishing the design of a new substation, which will be located outside of Jeromesville and serve existing members, as well as the growing communities in this area.

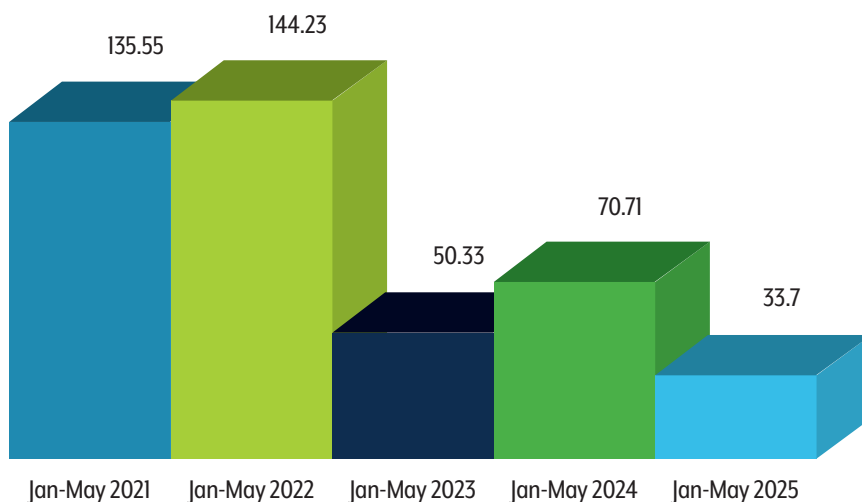


In addition to system improvements, Firelands has invested heavily in increasing the frequency of its tree and right-of-way maintenance program. In 2025, the board of trustees budgeted \$1.25 million dollars for the program. The cooperative is addressing 33% more of our system with each trimming cycle, which is helping reduce the number and length of outages.

Firelands Electric Cooperative is actively taking several steps to ensure that the cooperative is fully prepared to provide our member-owners with a reliable and affordable supply of power for their homes and businesses.

SAIDI Score History

(average length of outage per member measured in minutes)



By the numbers

REBATES & INCENTIVES

TOTALING MORE THAN

\$34,000

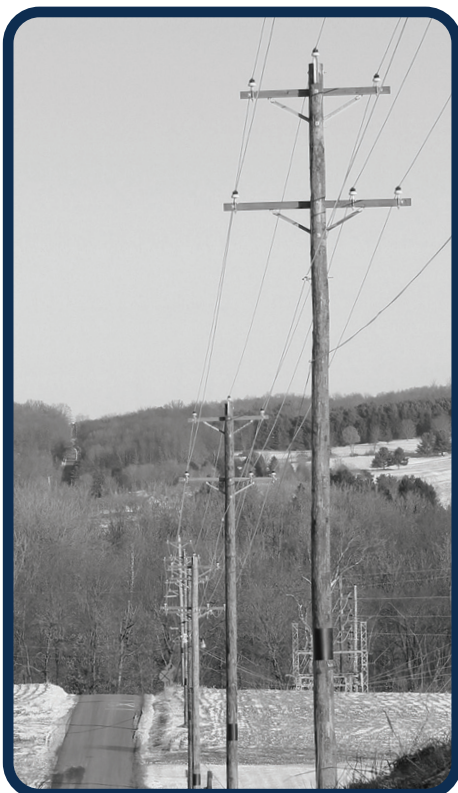
WERE PAID TO MEMBERS

**198,531
MILES**

WERE DRIVEN BY
CO-OP VEHICLES
TO MAINTAIN THE
DISTRIBUTION SYSTEM

71 NEW ELECTRIC SERVICES

WERE CONSTRUCTED
AND BUILT



OPERATION ROUND UP GRANTS

TOTALING

\$44,945

WERE AWARDED TO
13 CHARITABLE
ORGANIZATIONS

**\$1,203,835
IN CAPITAL CREDITS**

WAS RETURNED
TO CURRENT AND
FORMER MEMBERS

THE 7 COOPERATIVE PRINCIPLES

- ★ Voluntary and Open Membership
- ★ Democratic Member Control
- ★ Members' Economic Participation
- ★ Autonomy and Independence
- ★ Education, Training, and Information
- ★ Cooperation Among Cooperatives
- ★ Concern for Community

2024

327 MILES
OF RIGHT-OF-WAY
WERE TRIMMED

**\$10,500 IN
SCHOLARSHIPS**
WAS AWARDED TO
11 CHILDREN OF MEMBERS

MISSION STATEMENT

Improving the quality of life of our members by delivering reliable electric service at competitive prices, following the Seven Cooperative Principles, while supporting the communities where our members live and work.

Management and



DON ENGET
General
Manager



RICK BOWERS
Director of
Operations



ZACH COLLINS
Line
Superintendent



Julie Amato
Billing Representative



Scott Carbary
Contracted Energy Advisor



Evan Clemons
Lead Lineman



Colt Cross
Apprentice Lineman



Chris Kent
Journeyman Lineman



Josh Kirk
Operations Technician



James Miller
System Right-of-Way
Coordinator



Phil Pickering
Lead Lineman



Rob Swiger
Engineering Operations
Coordinator



Cindy Thompson
Accountant



Jake White
Apprentice Lineman



Matt Whiteside
Journeyman Lineman

Employees



ANDREA GRAVENHORST
Director of
Communications & IT



SHELLEY MAGYAR
Director of
Human Resources



TABI SHEPHERD
Director of
Finance & Accounting



Jared Galloway
Journeyman Lineman



Tracy Gibb
Communications & Member
Relations Specialist



Zach Hart
Apprentice Lineman



April Hicks
Operations Assistant



Stephanie Schmidt
Consumer Services &
AMI Coordinator



Jessica Schwanger
Part-Time Consumer
Services Representative



Robert Shepherd
Journeyman Lineman



Dave Sumpter
Lead Lineman



Jake Willbond
Apprentice Lineman



Melissa Wilson
Engineering & Operations
Data Coordinator



Melissa Zacharias
Accounting Clerk

Financial Health

COMPARATIVE BALANCE SHEET

FOR THE YEARS ENDED DECEMBER 31, 2024 AND 2023

UTILITY PLANT

Electric plant in service

Construction work in progress

Less: Accumulated provision for
depreciation and amortization

Net Utility Plant

NON-CURRENT ASSETS

Investments in associated organizations

Deferred charges

Total Non-Current Assets

CURRENT ASSETS

Cash and cash equivalents

Accounts receivable, consumers and

other, less allowance for doubtful
accounts of \$258,589 (\$255,763 in 2023)

Materials and supplies

Accrued utility revenues

Other current and accrued assets

Total Current Assets

Total Assets

MEMBERS' EQUITIES

Memberships

Patronage capital

Other equities

Total Members' Equities

NON-CURRENT LIABILITIES

Long-term debt

CURRENT LIABILITIES

Current portion of long-term debt

Accounts payable

Consumer deposits

Accrued taxes

Other current and accrued liabilities

Total Current Liabilities

Total Members' Equities & Liabilities

2024

\$ 59,368,521

3,720,886

63,089,407

(22,024,184)

41,065,223

10,107,060

17,617

10,124,677

1,131,500

2,076,804

938,260

531,778

440,164

5,118,506

\$ 56,308,406

2023

\$ 57,101,442

2,435,508

59,536,950

(20,762,252)

38,774,698

10,235,774

35,235

10,271,009

899,343

1,911,656

821,139

483,237

155,367

4,270,742

\$ 53,316,449

ASSETS

EQUITIES & LIABILITIES

STATEMENTS OF REVENUE & EXPENSES

FOR THE YEARS ENDED DECEMBER 31, 2024 AND 2023

OPERATING REVENUE

OPERATING EXPENSES

Cost of power
Distribution expense - operations
Distribution expense - maintenance
Consumer accounts
Administrative and general
Depreciation and amortization
Taxes

Total Operating Expenses

Operating margins before fixed charges
Interest on long-term debt

Operating margins after fixed charges
Patronage capital assigned by associated organizations

Net Operating Margins

NON-OPERATING MARGINS

Interest income
Gain on sale of assets
Other income (expense)

Total Non-Operating Margins

Net Margins for Period

PATRONAGE CAPITAL & OTHER EQUITY

Net Margins
Beginning of Year
Subtotal
Retirement of Capital Credits and Other Adjustments (Net)

Patronage Capital & Other Equities End of Year

2024	2023
\$ 24,606,828	\$ 22,709,297
13,796,475	12,376,048
1,632,935	1,428,400
2,372,628	2,424,531
867,474	808,808
1,513,105	1,365,019
1,852,204	1,786,852
513,463	509,893
22,548,284	20,699,551
2,058,544	2,009,746
844,649	780,242
1,213,895	1,229,504
426,627	771,383
1,640,522	2,000,887
85,303	77,004
3,283	8,841
(31,679)	(25,599)
56,907	60,246
\$ 1,697,429	\$ 2,061,133

MARGINS & EXPENSES

\$ 1,697,429	\$ 2,061,133
23,886,836	22,982,156
25,584,265	25,043,289
(1,057,630)	(1,156,453)
\$ 24,526,635	\$ 23,886,836

EQUITY

The accounts of your cooperative for the years ended December 31, 2024 and 2023, have been audited. The auditor's complete report is on file at the office of the cooperative and is available for inspection by the members of Firelands Electric Cooperative.

Fighting the way
since 1936



**Firelands
Electric**
COOPERATIVE
A Touchstone Energy Cooperative

Firelands Electric Cooperative, Inc.
103 Industrial Drive
New London, OH 44851

1-800-533-8658 | www.firelandsec.com

Office Hours: Mon.–Fri. 7:30 a.m.–4 p.m.