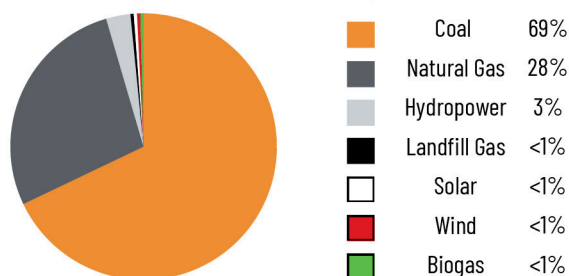


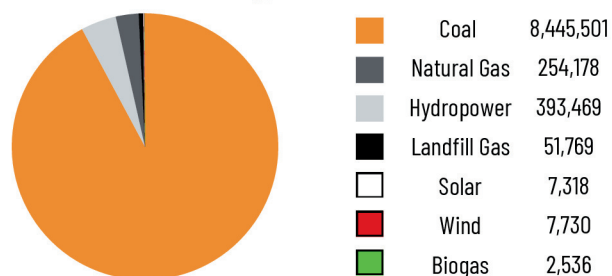
Buckeye Power Generation Resources

Buckeye's diversified generation mix, including both traditional and renewable energy, provides competitively priced and reliable electric power to its member-cooperatives.

Buckeye Power Capacity Portfolio



CY23 Energy Production MWh



Coal-fired Generation

Cardinal Operating Station

- Buckeye Power owns all three units at the Cardinal Station located in Jefferson County—Units 1 and 2, rated at 590 megawatts (MW) each, and Unit 3, rated at 620 MW. The power from Unit 1 is sold to AEPGR through a power purchase agreement through 2028.
- Operation and use of the Cardinal Station is in accordance with the Station Agreement dated January 1, 1968, as amended, by and between AEPGR, Buckeye and Cardinal Operating Company and continuing through December 31, 2028.
- Buckeye Power receives the capacity from Units 2 and 3. AEPGR receives the capacity of Unit 1 through the term of the PPA agreement, December 31, 2028. Each party will provide backup energy up to 50% of the capacity of Units 1 and 2 should the unit be out of service. AEPGR pays operations and maintenance cost for Unit 1.
- Buckeye Power has the right to use interchangeable major spare parts owned by AEPGR associated companies.
- Cardinal Units have been upgraded with modern environmental controls that significantly reduce emissions of sulfur dioxide, nitrogen oxides, mercury, particulates and acid gases.

Ohio Valley Electric Corporation (OVEC)

- Buckeye's 18 percent (18%) ownership in OVEC provides an entitlement to 389 MW of coal-fired capacity from OVEC's Kyger Creek and Clifty Creek plants.
 - Kyger Creek: 977 MW with five (5) units rated 195-MW each. Located in Gallia County.
 - Clifty Creek: 1,185 MW with six (6) units rated 198-MW each. Located in Jefferson County, Indiana.
- Terms and conditions governing Buckeye Power's rights and obligations as an owner of OVEC are defined in the Amended and Restated Inter-company Power Agreement with the seven (7) other utilities that own OVEC dated as of September 10, 2010 and running through June 30, 2040.
- OVEC units have been upgraded with modern environmental controls similar to Cardinal that significantly reduce emissions of sulfur dioxide, nitrogen oxides, mercury, particulates and acid gases,

AUG 23 2024

AUG 29 2024

Buckeye Power Generation Resources

Natural Gas Generation

Robert P. Mone Plant

- Buckeye Power owns the Robert P. Mone Plant located in Convoy, Ohio, in Van Wert County.
- The peaking plant has three General Electric 7FA combustion turbines with a capacity of 170 MW each, for total generation of 510 MW.
- The plant's primary fuel is natural gas; the alternate fuel is distillate oil.
- The plant began operation in 2002.
- Mone is a peaking facility used during times when there is high demand, generally for a few hours on the hottest and coldest days.
- Peaking facilities are less expensive to build than base load facilities but more expensive to operate.

Greenville Generating Station

- Buckeye Power owns the Greenville Generating Station located in Greenville, Ohio, in Darke County.
- The peaking plant has four Pratt & Whitney FT-8 Twinpac combustion turbines with a capacity of 50 MW each, for total generation of 200 MW.
- The plant's primary fuel is natural gas; the alternate fuel is distillate oil.
- The plant began operation in 2000. Buckeye purchased the facility in April 2007.
- The units are capable of operations in synchronous condensing mode to supply or absorb reactive power.
- Greenville is a peaking facility used during times when there is high demand, generally for a few hours per day on the hottest and coldest days.



Greenville Generating Station



Robert P. Mone Plant

Buckeye Power Generation Resources

Renewables

Solar Generation

OurSolar

- 1.6 MW – Phase I, multiple locations around Ohio
- 2.0 MW – Phase II, located in Findlay, Ohio
- Phase I is owned by Buckeye Power. Phase II is a PPA with a term July 11, 2022 through July 11, 2047
- Phase I interconnected with multiple co-ops. Phase II interconnected with Hancock-Wood Electric Cooperative

Gallia Local School

- 0.3 MW – Addaville Elementary school in Gallipolis, Ohio
- 0.2 MW – Southwestern Elementary in Patriot, Ohio
- PPA term June 1, 2018 through June 1, 2028; automatic one-year renewals following this term
- Buckeye Power purchases all energy output, but does not have entitlement to renewable energy credits
- Interconnection with Buckeye Rural Electric Cooperative

Paint Valley Schools

- 0.5 MW – School building in Bainbridge, Ohio
- PPA term November 10, 2021 through November 10, 2031; automatic one-year renewals following this term
- Buckeye Power purchases all energy output, but does not have entitlement to renewable energy credits
- Interconnection with South Central Power

Hord Family Farms

- 0.5 MW – Farm in Morral, Ohio
- 0.4 MW – Farm in Bucyrus, Ohio
- 0.3 MW – Farm in Bucyrus, Ohio
- PPA term November 5, 2021 through November 5, 2031; automatic one-year renewals following this term
- Buckeye Power purchases all energy output, but does not have entitlement to renewable energy credits
- Interconnection with Mid-Ohio Energy Cooperative



Buckeye Power Generation Resources

Renewables

Solar Generation

Hillandale Farm

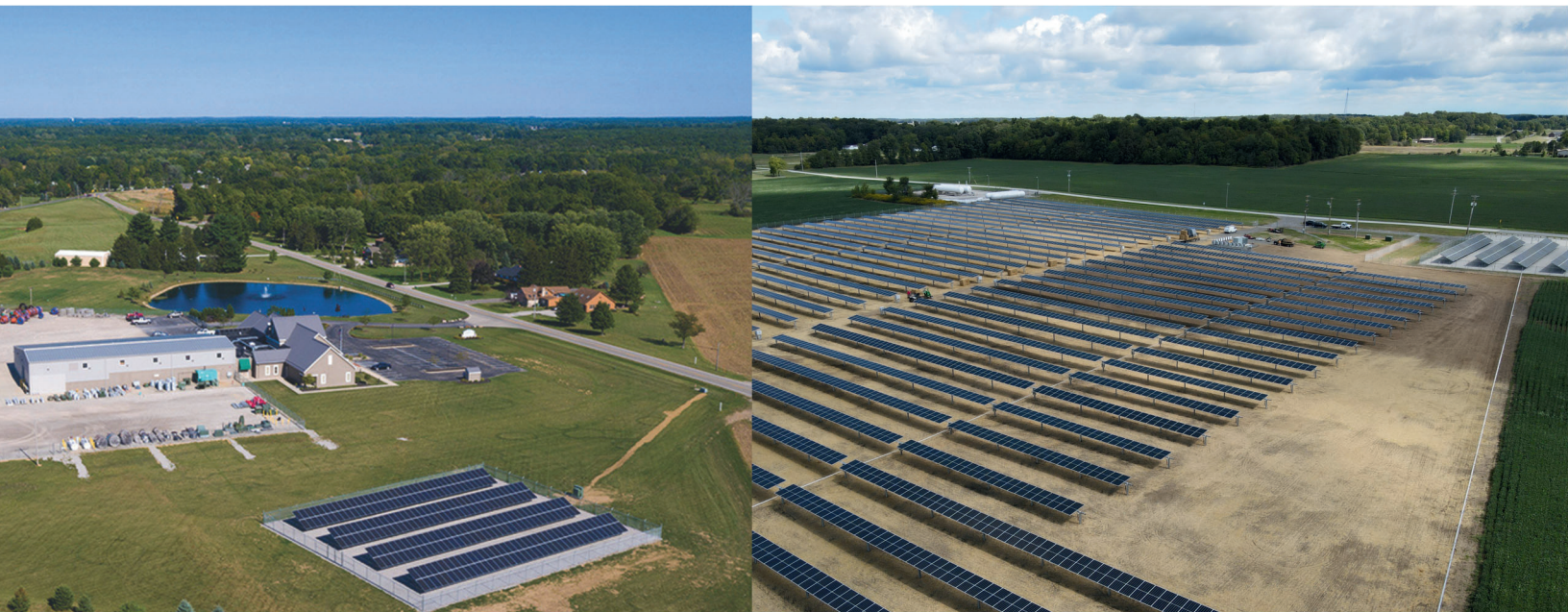
- 0.4 MW – Egg farm in Hicksville, Ohio
- PPA term December 27, 2023 through December 27, 2033; automatic one-year renewals following this term
- Buckeye Power purchases all energy output, but does not have entitlement to renewable energy credits
- Interconnection with North Western Electric Cooperative

Outward Farm

- 0.2 MW – Egg Farm in Raymond, Ohio
- PPA term December 9, 2024 through December 9, 2034; automatic one-year renewals following this term
- Buckeye Power purchases all energy output, but does not have entitlement to renewable energy credits
- Interconnection with Union Rural Electric Cooperative

Symmes Valley Schools

- 0.2 MW – Symmes Elementary school in Willow Wood, Ohio
- 0.1 MW – Symmes High School in Willow Wood, Ohio
- PPA term June 9, 2022 through June 9, 2032; automatic one-year renewals following this term
- Buckeye Power purchases all energy output, but does not have entitlement to renewable energy credits
- Interconnection with Buckeye Rural Electric Cooperative



Buckeye Power Generation Resources

Renewables

Wind Generation

RP Wind

- 3.4 MW – located at Honda Transmission facility in Russels Point, Ohio
- PPA term December 28, 2023 through December 28, 2033; automatic one-year renewals following this term
- Buckeye Power purchases all energy output, but does not have entitlement to renewable energy credits
- Interconnection with Logan County Electric Cooperative

Whirlpool

- 1.5 MW – located at Whirlpool facility in Ottawa, Ohio
- PPA term February 1, 2018 through February 1, 2028; automatic one-year renewals following this term
- Buckeye Power purchases all energy output, but does not have entitlement to renewable energy credits
- Interconnection with Paulding Putnam Electric Cooperative



Buckeye Power Generation Resources

Renewables

Landfill Gas to Energy

WM Renewable Energy

- 6.4 MW – Suburban Landfill near Mount Perry, Ohio
- Current PPA term December 1, 2020 through December 1, 2030; automatic one-year renewals following this term
- Buckeye Power purchases all energy output, but does not have entitlement to renewable energy credits
- Interconnection with South Central Power

Energy Developments

- 3.2 MW – Hancock County Landfill near Van Buren, OH
- Current PPA term September 14, 2024 through September 14, 2027; automatic one-year renewals following this term
- Buckeye Power purchases all energy output, but does not have entitlement to renewable energy credits
- Interconnection with Hancock-Wood Electric Cooperative



Biogas-to-Energy

Emerald Bioenergy

- 0.85 MW – Hog farm in Morrow County, Ohio
- PPA term April 16 - 26, 2023; now continuing on automatic one-year renewals following original term
- Buckeye Power purchases all energy output, but does not have entitlement to renewable energy credits
- Interconnection with Consolidated Cooperative