



GM'S REPORT



# MORE THAN JUST HITTING THE BOOKS

The smell of a recently sharpened box of pencils. The feel of a new pair of sneakers. Calling out to a friend in the hallway. There's nothing else quite like the experience of returning to school every fall. Whether a student looks forward to studying a new subject, mastering a skill, improving their game, or socializing with friends, what they learn during these years will ultimately affect the adults they become.

Our local students are the future of our co-op and our community, and Firelands Electric places a great emphasis on supporting them. We take steps to help strengthen existing programs for youth and are constantly looking for new ways to positively influence the leaders of tomorrow.

Many of the cooperative's initiatives support traditional forms of education. For example, The A Team recognizes the academic achievements of middle school students following every grading period. Operation Round Up grants have helped purchase classroom equipment, and our sizeable scholarship program supports students who wish to continue their education after graduation. But learning doesn't come just from the classroom — it also comes from experiences. For this very reason, Firelands Electric Cooperative supports numerous types of youth activities across a wide range of age groups.

Some of the cooperative's contributions to local youth programs merely involve providing financial support. Whether it be sponsoring advertisements in a school sports program, donating a raffle basket to a prom fundraiser, or Firelands' annual donation to the junior fairs in our service territory, this support helps students participate in activities that help them grow into well-rounded adults.

It probably comes as no surprise that learning about electricity is paramount to Firelands Electric Cooperative's educational goals. Recurring programs, such as our annual electrical safety contest for grades K-5 and the longstanding tradition of helping 4-H Camp Conger attendees build their own extension cords and lamps, have helped generations of youth understand about the power and the dangers of electricity.

Conducting onsite safety programs is yet another way the cooperative provides electrical safety education to students. We've recently participated in events organized by the New London FFA, Village of Monroeville, and New London Preschool.



Dan McNaull  
GENERAL MANAGER

Firelands Electric also places great value on developing leadership skills in our local students. It's why we believe so strongly in the Youth Tour to Washington, D.C., and send students on this weeklong, all-expenses-paid trip every year. Participants not only learn about the role of electric cooperatives in their community, but also have the opportunity to meet their elected officials, see important historical landmarks, and gain a better understanding of the inner workings of the American government. This month's magazine cover features Plymouth High School's Abby Durbin, our 2022 delegate, who took the trip in June.

Some of Firelands' programs proudly celebrate the hard work of our youth. The Virtual Junior Fair, for example, allows area 4-H and FFA livestock exhibitors to show off the results of their projects through the cooperative's online photo gallery located at [www.flickr.com/photos/firelandsec/albums](http://www.flickr.com/photos/firelandsec/albums). Sometimes, we just share something amazing one student did on our Facebook page.

Firelands Electric Cooperative takes great pride in our youth and recognizing their achievements — both large and small. It's an important part of who we are. Quite simply put, it's part of our deeply rooted sense of community.

For a glimpse at some of Firelands Electric's recent youth programs, be sure to check out the photo gallery on the next page. For more information about the many activities we offer or participate in, visit [www.firelandsec.com/community](http://www.firelandsec.com/community) or follow us on Facebook or Instagram.



# Photo Gallery



To view photos from several of Firelands Electric Cooperative's recent events, visit [www.flickr.com/photos/firelandsec/albums](http://www.flickr.com/photos/firelandsec/albums)



In July, several Firelands Electric Cooperative employees presented electrical safety demos, games, and interactive displays for approximately 50 students in grades K-3 as part of the New London FFA's Safety Town program. At far left, Journeyman Lineman Dave Sumpter gives students a brief lesson on the equipment used when restoring outages and maintaining power lines. At left, Lead Lineman Fred Hartman conducts a short demonstration about the dangers of electricity and how to be safe when working and playing around overhead power lines.



Abbie Durbin of Plymouth, above center, was one of 38 students from electric cooperatives across Ohio to attend the Youth Tour to Washington, D.C., this past June. "I would definitely recommend this trip! It's an amazing learning opportunity and Washington is full of so much history," says Abbie. Each year, Firelands Electric selects up to two delegates to participate in this weeklong, all-expenses-paid trip. Abbie, who is also featured on the cover of this month's issue, was especially excited to catch a glimpse of the FBI Building during the trip, since she plans to pursue a future career with the Behavioral Analysis Unit.





## CO-OP NEWS

# PHIL PICKERING

## CELEBRATES 20 YEARS

Phil Pickering marks 20 years with the cooperative this month. He joined Firelands Electric on a part-time basis in the spring of 2000, performing tasks such as mowing substations, flagging traffic, and maintaining the warehouse and equipment.

In September 2002, he was hired as a full-time apprentice lineman. After completing the Dennis Merchant lineman training program and 8,000 hours of on-the-job training, Phil earned the title of construction lineman in November 2005.

Firelands Electric promoted Phil to lead lineman in June 2007. In this position, he is responsible for running a line crew, which involves everything from setting up a job for the day to line maintenance and paperwork. Phil also handles line construction, where he often works directly with members. Some of his projects include substation and underground residential distribution (URD) maintenance, replacing poles, installing transformers, and repairing circuit breakers and switches to provide members with dependable electric service. Outage restoration and periodic after-hours on-call service are also part of his duties.

Phil says he enjoys working at the cooperative, especially getting to be outside every day and helping maintain reliable electric service for Firelands' members. "I work with some of the most capable and dedicated co-workers. We are all extremely committed to our members and, especially during outage situations, sometimes spend more time together than we do with our own families," says Phil.

A native of the New London area, Phil lives on the family farm with his girlfriend, Stephanie, and his two children, Peyton and Beau. When not at Firelands Electric, he works on the family beef cattle farm and spends time helping his children with their 4-H projects. The family also enjoys spending time together in the great outdoors, especially camping and snowmobiling. "We love everything from cooking s'mores to playing sports and everything in between," says Phil.



Phil Pickering  
LEAD LINEMAN



# Happy Labor Day!

The Firelands Electric Cooperative office will be closed on

## Monday, Sept. 5

As always, emergency service is available 24/7 by calling 1-800-533-8658.



## CO-OP NEWS

# OURSOLAR<sup>2</sup>

## CO-OP COMMUNITY SOLAR PROGRAM EXPANDS

Firelands Electric Cooperative members will soon have an additional, cost-effective alternative for renewable energy with the addition of a new community solar array built by Buckeye Power, Firelands' generation and transmission cooperative.

### The first phase

The existing solar field at Firelands Electric's facility is one of 24 OurSolar sites across the state. Twenty-three of Ohio's electric cooperatives participate in this statewide community solar initiative, with each co-op hosting a portion of the 6,358 panels. Combined, the project has a production capacity of 4.77 megawatts (MW).

Residential solar is not a good solution for every co-op member. For those who would like to support renewable energy initiatives without the hassle and expense of residential rooftop solar, the OurSolar program allows members to purchase electricity produced by Firelands' solar array for a small per-kilowatt-hour (kWh) premium. By grouping solar panels together, costs are shared and power output is maximized. With community solar, there is no equipment for members to install, and all maintenance costs are included in the subscription rate. Firelands Electric Cooperative members can subscribe to the output of up to 10 panels. Each panel generates an average of 30 kWh per month, or 375 kWh per year, depending upon sunlight conditions.

Firelands' solar array went online in September 2018, and in just a few short months, co-op members had subscribed to purchase the power produced by all 152 panels. To date, the cooperative's 50-kilowatt solar array has generated over 208,000 kWh of electricity.

### Introduction of Phase 2

Due to the popularity of the OurSolar program, Buckeye Power and Ohio's Electric Cooperatives are launching a second phase. The new 15-acre, 5,600-panel solar field is located near Findlay, Ohio. Co-op members across the state, including those from Firelands Electric, will have the opportunity to purchase renewable energy from this new 2.66 MW solar array.

Advances in technology and reductions in manufacturing costs continue to make it less costly to generate electricity via solar. Those participating in both the first and second phases of OurSolar will pay a smaller premium to participate than the premium at the project's launch in 2018. The current charge for OurSolar is an additional \$0.015/kWh above and beyond Firelands' standard kWh rate. The new premium, however, will only add an extra \$0.012/kWh — for both existing and new subscribers. This means that renewable solar power can cost you less than \$1 per panel per month. Complete details about this price adjustment are being sent out to those members currently participating in the first phase of OurSolar.

Information on how to subscribe to purchase energy from the newly expanded OurSolar program will soon be available to all Firelands Electric Cooperative's residential members. In the meantime, check out the next page for answers to some of the most commonly asked questions. Those who are interested in participating in Phase 2 may also complete the form located at [www.firelandsec.com/oursolar-community-renewable-program](http://www.firelandsec.com/oursolar-community-renewable-program) or call 1-800-533-8658 to receive additional details and a contract once subscriptions are open.

---

*Powering the co-op community - one ray at a time.*

---



### **What is the cost to participate?**

The average additional cost is less than \$1 per panel, per month.

### **Is there a limit to the number of panels I can subscribe to?**

Residential members can subscribe to the energy output of up to 10 panels.

### **How long is the term of the agreement?**

Members enrolling in OurSolar will sign an agreement to purchase the power produced by a set number of panels for a period of five years.

### **What happens if I move?**

If you move to another location within Firelands Electric Co-op's service territory, your subscription can "move" with you! If you move out of the service territory, you have the following options:

1. Transfer your subscription to another member of Firelands Electric Cooperative.
2. Transfer your subscription as part of the sale or rental of your home.
3. Return your subscription back to Firelands Electric Cooperative at no cost.

### **What if I cancel the agreement early?**

If the agreement is canceled early due to moving or death, then the options under "What happens if I move?" apply. If the agreement is canceled early due to a different reason, then the subscription may be returned to the cooperative by paying an administrative fee of \$50 per panel.

### **Will any equipment be hooked to my home?**

No. The power generated by OurSolar will be distributed by the state's electric co-op community.

### **If I subscribe to a panel of OurSolar, will I stop receiving my monthly bill?**

No. You will continue to receive your monthly bill, but your bill will now show that a portion of your energy is produced by your solar panels and paid for at the OurSolar rate (\$0.12985 /kWh).

### **Will this lower my bill?**

No. OurSolar is not intended as a cost-savings initiative but as an alternative to costly rooftop solar.

### **Can I take advantage of any incentives to bring down the cost of a panel?**

OurSolar has sought out and taken advantage of all available tax credits, rebates, and incentives in order to make the program as affordable as possible. These cost reductions are included in the subscription rate.

### **Is energy production guaranteed?**

No. The energy produced for each panel is expected to be about 375 kilowatt-hours per year, but may be more or less in any given year depending on weather conditions.

### **Can anyone sign up for Firelands Electric's OurSolar program?**

Only residential members of Firelands Electric Cooperative may subscribe to panels.

### **How do I get more information and a contract?**

Residential members interested in participating in OurSolar Phase 2 may complete the form located at [www.firelandsec.com/oursolar-community-renewable-program](http://www.firelandsec.com/oursolar-community-renewable-program) or call the cooperative at 1-800-533-8658 to receive more information and a contract when they become available.



SAFETY

# STAYING SAFE

## AROUND YOUR METER



What you need to know about unauthorized access

Firelands Electric Cooperative's primary mission is to provide dependable power to the 9,100 homes and businesses we serve. As a member — and an owner — of the cooperative, we rely on you to help us achieve this goal. Together, we're responsible for the safe and proper operation of the equipment Firelands uses to deliver power.

An often-overlooked piece of cooperative-owned equipment is the meter, which silently and safely measures usage, monitors for problems, and generates data members can use for home efficiency efforts. Meters are installed and owned by the cooperative, but if a member wants to update their home's siding, complete other exterior home improvements, make some electrical repairs, or perform certain kinds of electrical upgrades, the meter may need to be removed.

What should you do if you find yourself in a situation where your meter needs to be removed? Follow these guidelines — for your safety, as well as to protect yourself from creating unnecessary damage or fees.

- **CALL FIRELANDS ELECTRIC FIRST** — never allow a private electrician, contractor, or other non-cooperative employee to remove your meter, even temporarily. Pulling the meter yourself, or allowing someone else to do so, is unauthorized equipment access. Not only is it dangerous, but it could also cause damage that could result in hefty fees. In addition, Firelands Electric will need to make a trip

to your location to ensure the reinstalled meter is operating safely, as well as resecure the meter seal. Firelands' meters are equipped with technology that alerts us when a meter is removed or tampered with — so don't take a chance. Call our operations department first at 1-800-533-8658.

- **PLAN AHEAD** so that once the cooperative has pulled your meter, any work you require can be performed safely and efficiently, and the meter can be reinstalled by cooperative personnel as soon as possible. Be sure to ask your contractor about this as you are planning any project that requires your service to be disconnected or your meter to be removed. Scheduling a temporary disconnect during business hours is completely free of charge. Firelands regularly coordinates this kind of work with private electricians and contractors, and we're here to help!
- **DON'T FALL FOR SCAMS** regarding your electric meter. Any device that bypasses or claims to slow your electric meter is illegal and can result in damage to your home and prosecution for power theft, a felony charge that can carry hefty fines and jail time. If you want to save money and slow down your meter, do it by decreasing your energy use. Take a look at energy savings tips at [www.firelandsec.com/energy-education](http://www.firelandsec.com/energy-education), at [www.energy.gov/energysaver](http://www.energy.gov/energysaver), or call Firelands at 1-800-533-8658 if you need assistance with saving energy around your home or business.



## PAD-MOUNTED TRANSFORMER precautions

Most of us are familiar with the can-style transformers that hang from many utility poles. Transformers are used to change voltage levels. For example, the one positioned outside your home converts voltage from higher to lower levels so that the power entering your home is properly regulated for the electronics, appliances, and lighting you use every day. Each of Firelands Electric Cooperative's transformers is vital to providing safe, reliable electricity to one or more homes or businesses.

Overhead transformers and power lines are mounted on utility poles, providing them with an extra layer of safety. However, there are other styles of transformers and equipment that are installed at ground level, making them easier to access. For this very reason, it's important to take extra precautions around this equipment.

Pad-mounted transformers (also called ground transformers), switch boxes, and pedestals are required

for certain homes and businesses, especially those with underground wiring. Firelands Electric Cooperative has roughly 275 pad-mounted transformers on its system. They are connected to primary high-voltage lines, and secondary lines can also extend in several directions to distribute power to homes and businesses. It is extremely dangerous to tamper with these big green metal boxes.

While you may seldom see Firelands crews working on pad-mounted transformers unless there are power outages, they are regularly inspected. Co-op crews need at least 10 feet of clearance on all sides of a pad-mounted transformer, and the front should be kept clear of all obstructions, including trees, shrubs, or other vegetation; outbuildings; fencing; or even sprinkler systems. This distance allows room for Firelands' linemen to work. Tools like hot sticks, which are used to work with energized equipment, are typically eight feet in length. Keeping this amount of space clear also ensures that crews working on a transformer have space to safely maneuver, especially in the case of an emergency.

Because they are surrounded by underground wiring, it's also important to never dig near a pad-mounted transformer. Hitting a wire could result in electrical shock, power outages, or costly damage. Always call 8-1-1 before you perform any landscaping or other work that involves digging — it could save a life.

Finally, never allow children to climb or play on pad-mounted transformers. Don't put sticks, fingers, or other objects into any gaps. And, if you notice something amiss about a transformer, such as damage or an open door, contact Firelands Electric immediately. If you're not sure if a situation could possibly be dangerous, err on the side of caution and call the Firelands Electric Cooperative office at 1-800-533-8658.



### PLAN BEFORE YOU PLANT

Shrubs, ornamental grasses, and trees planted too close to pad-mounted transformers can significantly slow restoration times during a power outage. They can also create a serious safety hazard for Firelands Electric Cooperative crews who need to access or service the units. If vegetation is hindering crews' work, it may become necessary to clear it away. Unfortunately, in the photo shown below, Firelands Electric crews had to remove a member's

landscaping in order to perform maintenance on this transformer. Avoid this dilemma by planning ahead when planting near a pad-mounted transformer.







## ENERGY EFFICIENCY

# LOSING MONEY AT THE SEAMS

One of the most prevalent causes of energy loss is duct leakage. Between 20 and 30% of the air moving through your home's system is lost due to leaks, holes, and poor connections in the ductwork. While the problem affects all types of homes, the most common offenders are found in mobile homes, homes on crawl spaces, and houses with ductwork in the attic or garage. The result — decreased comfort and higher energy bills.

Losing even a small amount of the air that you pay to heat or cool can add up. And if the air loss is significant enough, it can result in big bucks. The U.S. Department of Energy estimates that most homes could save around 15% on their heating and cooling costs by reducing ductwork leaks. For a home that spends \$2,000 a year, that's a savings of \$300!

Besides saving money, there are several other benefits to properly sealing your duct system. The most important is comfort. Sealing leaky ducts can help with common problems such as rooms that are too cold in the winter or too hot in the summer. Improved air quality is another advantage. Sealing ducts can reduce the risks of pollutants entering the home from dusty attics or musty crawl spaces. Dust, insulation particles, or mold spores from damp spaces can aggravate asthma and allergies. There is also the additional benefit of safety, as properly sealed return ducts will not pull gasoline and exhaust fumes from the garage or mold and radon gas from a crawl space or cellar into the HVAC system.

Fortunately, sealing minor ductwork leaks is relatively simple and inexpensive. Start with an inspection of your ductwork and vents. Take off the grills and look for possible air leaks in both delivery and return vents. Pay extra attention to this area on mobile and manufactured homes, since they are moved after construction. Inspect all ducts that you can reach in your cellar, basement, attic, crawlspace, and/or under skirting.

Where ducts are accessible, seal leaks, holes, seams, and connections with duct sealant (mastic) or metal-backed (foil) tape. Never use duct tape, as it won't stand up to the extreme temperature changes of your HVAC system. Make sure the surface is clean before applying sealing materials so that it stays in place.



Never use duct tape to seal air leaks. It isn't made to stand up to the extreme temperature changes of an HVAC system and won't last. Always use mastic, foil tape, or other products specifically made for ductwork.

It's also a good idea to look behind or under your register grills. Seal what can be reached with caulk, duct mastic, or a product like Aeroseal. You can also check out this video to see how to properly seal this area: [www.youtube.com/watch?v=4UhrkNSBuE8](https://www.youtube.com/watch?v=4UhrkNSBuE8). For more severe or inaccessible ductwork problems, you may want to contact a professional that offers duct testing and sealing. The money you save on your heating and cooling bills could be worth it.

If your home tends to have higher winter bills or you struggle to keep certain rooms comfortable, now's the time to consider checking your ductwork for leaks — before the colder weather arrives. If you have questions regarding ductwork sealing, contact Firelands Electric Cooperative's energy advisors at 1-800-533-8658 or visit [www.energy.gov/energysaver/minimizing-energy-losses-ducts](http://www.energy.gov/energysaver/minimizing-energy-losses-ducts).

### FIVE SIGNS THAT YOU COULD HAVE PROBLEMS WITH YOUR DUCTWORK

- You have high heating and cooling bills.
- You have rooms that are difficult to heat and cool.
- You have stuffy rooms that never feel comfortable.
- You find tangled or kinked flexible ducts in or under your home.
- You have ducts located in the crawl space, attic, garage, or unconditioned cellar.



## YOUTH PROGRAMS



Education helps shape the leaders of tomorrow. That's why Firelands Electric includes it as one of our seven core principles. The A Team is a cooperative program designed to encourage students in their pursuit of academic excellence. Students in grades 6–8 are invited to participate and be recognized for their hard work and dedication to education.

### How you can win

Students in grades 6–8 who have a minimum of three A's on their most recent report card and whose parents or guardians are members of Firelands Electric Cooperative are eligible to apply. A copy of the report card should be submitted by mail to Attn: The A Team, Firelands Electric Cooperative, P.O. Box 32, New London, OH 44851. Report cards may also be emailed to [members@firelandsec.com](mailto:members@firelandsec.com).

Be sure to include the student's name, age, school, grade, address, phone number, parents' name(s), and email address on your entry. Complete program details are also available at [www.firelandsec.com/team](http://www.firelandsec.com/team).

# ACADEMIC EXCELLENCE

Winners of July drawing receive Amazon gift cards



**Bryan Chaffee**  
 South Central Local Schools  
 Son of Ben and Jody Chaffee



**Ayden Salyer**  
 Hillsdale Local Schools  
 Son of Victoria Turner



**Adam Wilhelm**  
 Monroeville Local Schools  
 Son of Dan and Jackie Wilhelm

**Send us your grade card and win!**  
 The next drawing will be held on Dec. 10.



GOVERNMENT

# Become part of something BIG!



As a member of Firelands Electric Cooperative, you are among the 42 million Americans who have a voice in the operation of their local electric provider. By joining ACRE Co-op Owners for Political Action, you have an additional opportunity to be heard regarding the state and federal legislative issues that could impact your electric bills and the availability of affordable, reliable, safe, and environmentally conscious power.

For only \$2.08 a month, you can become part of a proud, nonpartisan network of 5,989 co-op members in Ohio and 31,093 across the nation who make their voices heard on issues that influence access to dependable power for their homes, businesses, and communities. By joining ACRE Co-op Owners for Political Action for just \$25 a year, you can help support government officials who stand behind rural electric service.

Current members of ACRE Co-op Owners were mailed an invitation to Firelands Electric Co-op's third ACRE Member Recognition Breakfast, which is scheduled for Monday, Sept. 12. This free, invitation-only event will give ACRE members an opportunity that most other utility consumers never have — to meet and interact with legislators on the local, state, and even federal levels. Legislators representing portions of Firelands

Electric's four-county service territory will provide updates on issues that are affecting electric cooperatives across the Buckeye State and nationwide, as well as on federally funded projects benefiting rural Americans.

There's still time to become a member of ACRE Co-op Owners for Political Action and attend this exclusive event! To sign up, complete and return the form below or contact Firelands Electric Cooperative at 1-800-533-8658. We also encourage you to call if you have questions or would like additional information about the ACRE breakfast.

Thank you for your continued support of the ACRE program and your dedication to keeping the voice of America's electric cooperatives heard.

*Contributions to ACRE Co-op Owners for Political Action are not tax deductible. All contributions to ACRE are voluntary and will be used for political purposes. Contribution guidelines are suggestions only. You may contribute more or less than the recommended amount. You may refuse to contribute without reprisal.*



**YES!**

**I want to help keep the voice of rural electric cooperatives heard in the political process by participating in ACRE Co-op Owners for Political Action.**

### Monthly Bill Addition

- ☐ REGULAR: \$2.08 PER MONTH (\$25/YEAR)  
☐ CENTURY CLUB: \$8.33 PER MONTH (\$100/YEAR)  
☐ PRESIDENT'S CLUB: \$41.66 PER MONTH (\$500/YEAR)\*  
☐ OTHER \$ \_\_\_\_\_

*(Authorized bill additions will continue until terminated by the member)*

### One-Time Contribution

- ☐ REGULAR: \$25  
☐ CENTURY CLUB: \$100  
☐ PRESIDENT'S CLUB: \$500\*  
☐ OTHER \$ \_\_\_\_\_

**I affirm that my contribution has been made with non-corporate funds** *(Please make checks out to Firelands Electric Cooperative):*

NAME: \_\_\_\_\_ ADDRESS: \_\_\_\_\_

CITY: \_\_\_\_\_ STATE: \_\_\_\_\_ ZIP: \_\_\_\_\_ COOPERATIVE: \_\_\_\_\_

EMAIL: \_\_\_\_\_ SIGNATURE: \_\_\_\_\_

**\*Federal Election Law requires the following information for contributions exceeding \$200:**

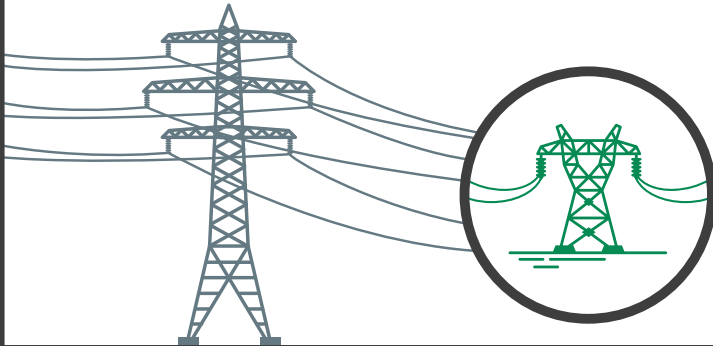
EMPLOYER: \_\_\_\_\_ OCCUPATION: \_\_\_\_\_

Contributions to the National Rural Electric Cooperative Association (NRECA) Action Committee for Rural Electrification® (ACRE®) are not tax deductible. Contributions to ACRE are voluntary and will be used for political purposes. You have the right to refuse to contribute without reprisal. Any contribution guidelines presented are merely suggestions. You are free to contribute more or less than the suggested amounts, or not at all. NRECA will not favor or disadvantage anyone by reason of the amount contributed or a decision not to contribute.



## The steps to restoring power

When a major outage occurs, our crews start with the repairs that will restore the greatest number of people in the shortest amount of time — and will continue this process until everyone has power.



### 1. High-voltage transmission lines

These lines carry large amounts of electricity to great number of homes and businesses, so they must be repaired first.



### 2. Distribution substations

Crews inspect substations next, which can serve hundreds or thousands of people.



### 3. Main distribution lines

Main lines serve essential facilities like hospitals and larger communities.



### 4. Individual homes and businesses

After main line repairs are complete, we repair lines that serve individual homes and businesses.



## COOPERATIVE UPDATE

# BOARD MEETING *highlights*

*Firelands Electric Cooperative's board of trustees met June 28 and covered the following items:*

- General Manager Dan McNaul reviewed OEC's Statistical Report, noting that load management efforts have helped keep costs in check.
- Director of Operations Don Englet reviewed recent activities and projects in the operations department, including the restoration efforts needed as a result of the June 13-14 severe storm event. He commended both operations and office staff for their dedication and professionalism during this time.
- McNaul advised that capital credits allocation notices were mailed out to members for 2021.
- McNaul discussed the ongoing increased costs for equipment and materials and the effect on the cooperative.
- Following discussion, the board voted to participate in the second phase of OEC's OurSolar program.
- McNaul recapped the 2022 Member Appreciation Day and annual meeting held on June 18 at the cooperative's facility in New London.

- Director of Finance and Accounting Tabi Shepherd reviewed the May financials and reported on recent accounting and billing department activities.
- McNaul reviewed the monthly tree-trimming and outage reports.
- The board elected officers for the upcoming year. Dan Schloemer was selected to serve as board president, Bruce Leimbach as vice president/assistant secretary, and Carl Ayers as secretary/treasurer.
- Director of Communications and Technology Andrea Gravenhorst reviewed recent activities involving the member services and IT department.

Firelands Electric Co-op is democratically controlled and governed by local people committed to policies that result in a safe and reliable electric system, fair rates, financial responsibility, and superior member service.

The cooperative's next board meeting is scheduled for Tuesday, Sept. 27. If you would like to attend the next scheduled meeting, please contact the Firelands Electric office at 1-800-533-8658.

### FIRELANDS ELECTRIC COOPERATIVE, INC.

#### OUTAGE HOTLINE

1-800-533-8658

#### OFFICE

103 Industrial Drive  
P.O. Box 32  
New London, OH 44851  
1-800-533-8658

#### OFFICE HOURS

Mon.-Fri. 7:30 a.m.-4 p.m.  
[www.firelandsec.com](http://www.firelandsec.com)



### BOARD OF TRUSTEES

Dan Schloemer  
President, District 1

Bruce Leimbach  
Vice President, District 4

Carl Ayers  
Secretary/Treasurer, District 5

Elaine Oswald  
District 8

Tom Lucha  
District 3

Gene Lamoreaux  
District 2

John Martin  
District 9

Kevin Reidy  
District 6

Rob Turk  
District 7

### GENERAL MANAGER

Dan McNaul

#### HAVE A STORY SUGGESTION?

Email your ideas to:  
[members@firelandsec.com](mailto:members@firelandsec.com)

**Firelands**  
**Electric**  
**COOPERATIVE**  
A Touchstone Energy® Cooperative 